

NOVEMBER SAVINGS

T-n-A Custom Motorcycles
Tom Russell "Best of Show"
Midwest Open House
Bike Show Winner

Buy for Your
Winter Projects
Now!

(Also won "Most Innovative")

"Wave" Headlights



Bottom mount headlight has two H3 12V/55 w bulbs. The housings are hand polished and chrome plated. They are ECE approved for high beam and fog lamp. Measures 152mm x 70.4mm x 60.6mm.

8N315 Headlight with Clear lens.

8N316 Headlight with Blue lens.

Ultima® Chromed ALuminum Headlights With Tri Bar



8N21 Headlight w/round visor, tri bar.
5-3/4" DIA. 9-1/2" Length (Long Body)

Drilled Bezeled Taillights



Taillight features a clear lens with super bright red LED's, license plate illumination, and hardware is included.

8N232 Drilled bezel taillight, black.

8N233 Drilled bezel taillight, chrome.

8N234 Drilled bezel taillight, gold.

5-3/4" Headlamp



Classically styled 5-3/4" chrome headlamps come completely assembled. Includes blue high beam indicator and mounting block. DOT 9809 approved. 12V; includes a 55/60 watt H4 bulb. Brighter is better!

8N195 Bottom mount headlight.

Spotlight with Sealed Beam



Replacement spotlight housing for OEM 68671-69. Used on 1965 & later Big Twin. Mounts like stock passing light.

8N138 Spotlight with sealed beam.
OEM 68671-69.

The Original Chopper Tail Light



The first chopper builders choose these taillights for the combination of toughness and small size. They held up well on "bone-rattlin" hardtails. Die cast, chrome plated. Due to small size of lens, use only for show and restoration purposes. Not DOT approved.

8N302 12V Taillight, red lens, LED illumination.

8N301 Same as above part No. 11-143 except polished.

LATE H-D® STYLE TAILLIGHT



Original style taillight for XL, FX, and all Big Twins 1973 thru 1999.

8N74 Taillight with 12V bulb. OEM 68008-73.

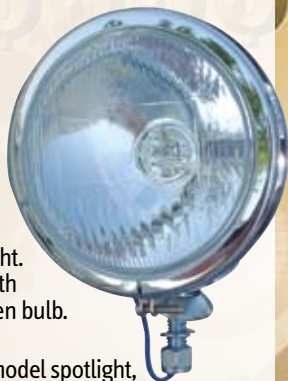
Cateye Taillight



Beautiful oval taillight with large license illumination lens. Flat back for universal mounting. Mounting screws 2" center to center. Will mount on part No. 11-39 taillight mount.

8N79 12V Taillight with plain lens.

4-1/2" Late Model Spotlight



A chrome plated reproduction of 1962 & later FL type spotlight. SAE Y97 approved with H3 12V, 55 watt halogen bulb. One wire lead.

8N194 4-1/2" Late model spotlight, OEM 68652-64B.

LED Turn Signal Kit



Kit includes 2 front bullet style signals w/dual function amber LED's and clear lenses, 2 front signal clamps for 41 mm forks. 2 rear bullet style signals w/dual function, red LED's and clear lenses, and 2 rear Duece™ style mounts.

8N321 Turn signal kit

LED Amber Light



6N102 Amber, Dual Filament, Replaces 1157.

LED Light Wedge Mounted



Stock style wedge mount bulbs for late 2003 applications.

6N112 Wedge mount single element Amber.

Mega Bright Halogen Taillight Bulb



"Mega Bright" halogen taillamp could help keep you from getting run over. 15 Watt taillight is 800% brighter than standard bulbs, and stop light is 50 watts — 3 times brighter than stock. One of the best safety items you can buy!

6N64 "Mega Bright" halogen bulb. Fits right into the stock bulb base.

H-4 Xenon Bulbs



Xenon gas is used to cool the filament and allow the halogen process to produce a higher light output. No wiring modifications or special installation required.

6N66 100/90W bulb.

6N67 130/90W bulb.

Wedge Mount LED Bulb



Stock style wedge mount bulbs for late 2003 applications.

6N68 3156 Wedge mount single element.

Stainless Steel Side Mount License Bracket



Side mount license/taillight mounts are fabricated from heavy gauge stainless steel then show polished to a beautiful finish. Designed to mount on axle.

11N120 Left side bracket for 3/4" axle & cateye taillight.

Lay Down License Plate Bracket



Die cast chrome plated license plate bracket has 3 hole mounting like stock H-D® bracket. Rubber spacers help eliminate vibration, and lets you adjust plate angle.

11N96 Fits all H-D® models with 3 or 2 hole mounting. Can be used on many custom applications.

Fat Bob® Style Ignition Switch with Round Key



Switch fits FLH, FLHR, and FXDWG models, 1995 & later, and all Softail® models 1996 & later.

17N115 Switch with round key. Replaces OEM 71501-93 & OEM 714313-96.

Load Equalizer For Use With LED's



17N132 Used to prevent irregular lighting when small LED turn signals are installed.

Handlebar Control Switch for H-D® 1971 thru 1981



17N49 Black Handlebar stoplight switch. OEM 72001-69A.



17N51 Black Switch for starter, horn, or turn signal on H-D® handlebar controls OEM 71484-72.

Circuit Breakers Type 1 Cycling Automatic Reset

Metal housings with brackets. Includes single U.S.A. MADE circuit breaker with mounting bracket.

17N78 Circuit breaker; 15 amp.

17N63 Circuit breaker; 20 amp.

17N79 Circuit breaker; 30 amp.



Round Key Ignition Switch



Now the ignition can have the security of a round key with multi-position switch. Key won't fall out in the "Off" position. Fits all FXR & XL, FX 1973 thru 1985, and all FXD. OEM 71428-90A. Easy installation.

17N84 Two-position switch.

Cigarette Lighter



Cigarette lighter & mounting bracket, with wire.

18N83 Cigarette lighter; fits any bike.

Handlebar Wiring Harness Kit



Handlebar wiring harness kits come 48" long with color coded wires and cover sheath. Switches are attached for both right and left sides.

Fits Big Twin '72 thru '81 & Sportster® '73 thru '81.

18N275 With Black switches.

Fits Big Twin and Sportster®, 1982 thru 1995.

18N231 With Chrome switches.

Fits Big Twin and Sportster®, 1996 & later.

18N331 With Chrome switches.

Ultima® Motor / CoilMount



This U.S.A. MADE, 1/4" thick, chrome steel adjustable mount will bolt-up to Big Twin V2-type motors. Can be used with tall cylinders. Mount is designed to be used with any 1999 & earlier type coil (bolt holes). The Crane coil, our part No. 53-377, works especially well.

5N218 Heavy duty motor/coil mount for V2 type motors.

Urethane Motor Mounts



These Urethane motor mounts replace the stock mount in all Big Twins fitted with rubber mounted engines. The special urethane formulated compound has enhanced compression & rebound dampening properties which gives a 20% reduction in transmitted vibration.

5N189 Chrome Big Twin urethane motor mount kit.

Ultima® Charging Systems



Kit includes chrome solid state voltage regulator, stator, rotor (your choice of heavy duty or late OEM style), and mounting hardware. Fits 1970 thru 1999.

53N606 Kit with late OEM style rotor; amp.



53N55 Kit with 38 amp components. Twin Cam.

Battery Strap



Made of black rubber.

5N129 1984/1991 FXST & FLT and 1979 Sportster®. OEM 66105-77.

Black Rubber BatteryTrays



Custom black rubber battery trays available in 2 sizes.

78N1 Black NBR rubber battery tray, 6.40" x 7.15".

78N3 Black NBR rubber battery tray, 4.00" x 8.00".

Chrome Aluminum Alternator Plug Retainer



Attached direct to the engine case to ensure that your plug stays in place and helps prevent any unwanted electrical shorts.

53N129 Chrome alternator plug retainer, fits Big Twins 70'-88'.

53N130 Chrome alternator plug retainer, fits Big Twins 89'-present.

Rotor



These rotors have enclosed magnets; no chance that they can come loose. Fits Big Twin 1981 & later. Replaces OEM 29957-81B & 29957-85A. Rotors will work on all H-D® Big Twin with correctly matched stator and volt pak. Refer to service manual for proper spacing due to different sprocket shaft lengths and compensator stack heights.

53N603 Heavy duty rotor; 22/32 amp. 15/32" Thick at splines. "No tear out."

Silver Horse® Steel Rear Fender



These fenders are manufactured in .078" steel; one-piece formed construction for added strength. The steel fenders have been Phosphate etched to help prevent corrosion and to give a good surface for primers to adhere to. All fenders are supplied raw and undrilled for custom applications. Approximately 135° wheel coverage.

19N168 11" Wide smooth Silver Horse® fender.

300 Series, 16 Gauge Steel Fenders

SMOOTH SENTRY has round cut sides and gives approximately 135° wheel coverage.



19N271 13" Wide smooth Sentry fender.

SMOOTH SABRE has a cropped look.



19N272 13" Wide smooth Sabre fender.



19N270 13" fender, 16 gauge, 300 tire.

Solid Ride Handlebar Dampers

Fits all models 1974 & later. Urethane bushings cut down vibration and at the same time give a more stable feel to the handlebars. Kit includes cup, sleeves and "Red" bushings.

34N125 Heavy duty washers & tube.



Front Fender for Narrow Glide



Custom steel front fender for Narrow Glide, 19" & 21" or Wide Glide with use of fender spacers. Approx. 5" wide.

19N301 Custom steel front fender.

11" Blank Fender



19N269 11" blank fender, 16 gauge, 250 tire.

Custom Steel Rear Fenders



.078" Steel; one-piece formed construction. The fenders have been Phosphate etched to help prevent corrosion and to give a good surface for primers to adhere to. Supplied raw and undrilled for custom applications

SMOOTH SABRE has a cropped look.

19N183 11" Wide smooth Sabre fender.



SMOOTH SENTRY has round cut sides and gives approximately 135° wheel coverage.

19N179 11" Wide smooth Sentry fender.

Short Risers for FL & FX



Die cast, chrome plated risers can be used on all models.

34N101 Fits FX 1979 thru 1983. Height is 2-1/16". 1/2" - 13 Threaded. OEM 56116-77 and 56117-77.

Black Passenger Floorboards



Floorboards available in a beautiful chrome or black finish. Fits 86' & later Touring & FL Softail models.

123N2 Black rider floorboard kit.

Shiftpeg for Forward Controls



Our chrome plated anti-vibe shifter peg isolates the vibration common on Harleys® by the design of hollow-core rubber inserts.

22N126 Shifter peg; 5/16" mounting bolt.

Rubber Insert Footrest



Chrome die cast footrests with black rubber inserts. Complete with 1" & 1-1/4" clamp set.

22N121 Rubber insert footrests.

Footpeg Mounts for Engine Guards



Clamp on peg mounts, use male end foot pegs. Comes in three sizes to fit most size engine guards. Requires 3/8x1-1/2" thru bolts to mount pegs.

23N2 Footpeg mounts for 1-1/4" bar, replaces OEM 50957-02A

Flush Mount Riser Bolts



Riser bolt kits are designed so you cannot see bolt heads. Available in two thread types.

34N128 Riser mounts, 1/2" x 13.

Round "Glide Riser"



Mount with 1/2"-13 bolts. For 7/8" handlebars order our part No. 34-82 reducers.

34N6 6" High for 1" handlebars.

34N7 8" High for 1" handlebars.

Handlebar Dampers



34N89 Fits all XL & FL models 1974 & later. OEM 56159-73, 56153-73 & 56158-73.

Internal Throttle Assembly



This design allows you to run a single throttle cable through your handlebar and out of view. Requires cutting off the right end of the handlebar.

35N105 Internal throttle assembly for 1" dia. bars.

35N106 Chrome piece to bridge the gap between internal throttle and switch housing.

Custom Clutch Lever



These custom hand levers are cut out on the blade to complement our Predator mirrors found further in this section..

47N177 Cut-out clutch lever for 1982 & later.

Chrome End Soft Grips



Extra soft neoprene foam cover absorbs vibration. Chrome end caps.

35N44 Fits 1" handlebars.

35N45 Replacement covers

Pebble Grain Grips



This style has a "cushy" feeling to knock out vibration but not the porosity found in the foam grip, resulting in a longer lasting grip that won't absorb moisture or have dirt build-up. Bright chrome ends with black grip.

35N53 Grips for 1" bars, 5" long.

Vintage Style Hand Grips



Black vintage style grip set with chromed accent band and dual cable throttle sleeve.

35N108 Fits 96' & up (OEM#56275-96)

35N109 Fits 82' thru 95' (OEM#56276-96)

35N4 Fits 08' FLT

Tornado II Handgrips



The Tornado II grip sets are CNC machined from billet aluminum and are available in a beautiful chrome or black anodized finish. They also feature non-slip hard wearing black rubber for fail safe operation. Fits 1" dia. handle bars, all HD models, twin cable throttle applications.

35N14 Chrome, Tornado II grip set.

Clutch Lever for H-D® 1982 thru 1992



Fits all FXR, FXRS, XL & FL models 1982 thru 1992.

47N97 Clutch lever. Polished aluminum. Replaces OEM 45017-82.

Wide Blade Power Grip Lever



These levers feature power leverage design and wide blade for a more comfortable grip.

47N199 1972 Thru 1981 brake lever. Chrome.

Billet Style V-Groove Grips



5" Long chrome grips for dual cable. **35N93** Barrel profile V-groove grips.

Chrome Horse® II Wide Band Grips



These are matching grips to our Chrome Horse® II forward controls. Chrome grips with wide bands make it all come together. For all 1" dia. handlebars. The throttle sleeve is set up for push/pull cable system.

35N96 Chrome Horse® II wide band grips.

46N130



Maltese Cross Mirrors

46N130 PAIR



Die cast, chrome plated mirrors.

46N130 Mirror with short straight stem.

46N131 Mirror set with cutout stems.

Cat Eye Mirror Set



Smooth head and straight cutout stem.

46N134 Die cast, chrome plated mirrors. These mirrors are sold as pair.

Clutch Lever



47N268 Brake lever for 1996-2006.
OEM 45016-96. Chrome plated.

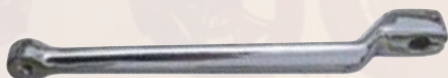


47-179 1982 & Later clutch lever.
Chrome plated. OEM 45017-93.

Shift Levers



47N183 Fits FLT 1984 & later. FLSTC Heritage,
all years, 2 used, FLSTF Fat Boy®,
all years, 2 used, FLSTN Nostalgia, all
years, 2 used, OEM 33895-82.



47N117 Same application as above part No.
47-183, except extended 2-1/4".



47N89 Fits Sportster® 1977 thru 1985.
Chrome. OEM 34606-75.



47N156 Fits Sportster® 1986 thru 1990.
Chrome. OEM 34606-86.

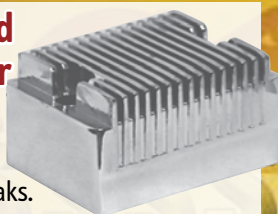
Switch Housings 1982 thru 1995



Handlebar switch housing. Fits 1982 thru 1995.

47N170 Switch housing kit with tops and
bottoms, chrome plated. Includes
hardware.

Chrome Plated Volt Pak Cover



89N381
Cover fits most voltpaks.



Ultima® RSD 6-Speed Cable Type Operated Clutch



201N33 Polished
RSD 6 Speed Transmission.

Ultima® LSD 6-Speed Fits Softail® models 91-99' and custom applications.



201N58 Black LSD 6 Speed Trans.

Easy Pull Clutch Kit for Big Twin



Reduces the amount of effort needed to
operate the clutch lever. Complete clutch
disengagement is still achieved. Installs easily.
96N560 Fits Big Twin 1987 & later except
FXR and Sportster® 1986 thru 1990.

Adjustable Lowering Kit for 2000 & Later Softail®



Versatile style enables you to adjust from
stock to approximately 2" lower.

5N230 For 2000 & later Softail®.

Custom Kickstand Extended Length

1936 Thru 1988
Big Twin 4 Speed &
Softail® Flat bottom.

87N85 For 4" to 6" over stock forks.

Complete Kickstand Kit for Big Twin



87N89 Fits FXWG 1980 thru 1986.
Replaces OEM 50040-80.

87N90 Chrome plated kickstand kit. Fits
4 speed FL, FX and Softail®
models, 1936 thru 1984.
Replaces OEM 50013-74A.

Ultima® Performance Clutch Kit



Ultima now offers performance clutch kits
for high output motors to direct power to the
pavement. These clutch kits are made using
high quality, high performance components.
Clutch kit includes quality friction plates
that utilize maximum surface area, high load
springs, a precision machined anodized billet
aluminum pressure plate designed to deliver
high power at minimal weight, and an inde-
structible direct fit clutch hub. Kits come with
three different spring rates to accommodate
all styles of riding.

96N730 High Performance Clutch kit. Fits
1998-06 Big Twin (except '06 Dyna's).

Ultima® Rear Pulley Sprocket Spacers



Polished finish rear pulley for sprocket spacers. U.S.A. MADE.

1999 & earlier hubs

58N180 1/8" Spacer (.250").

58N382 1/2" Spacer (.500").

2000 & later hubs

58N580 .125" Spacer (1/8").

58N581 .250" Spacer (1/4").

58N582 .3125" Spacer (5/16").

58N585 .750" Spacer (3/4").

58N586 .937" Spacer (15/16").

58N587 1.10" Spacer (1-7/64").

58N588 1.25" Spacer (1-1/4").



The sintered material pads offer a high friction level with superior heat transfer for increased fade free stopping power. The kevlar pads offer a smooth responsive feel that is gentler for polished or chrome rotors.

Fits FLT/FLHS/FLHT 1986-1999 rear. OEM 43957-86C.

90N30 Kevlar brake pad set.

Fits Softail models 2000-2007 front or rear (except rear on 2006-Present FXST, FXSTB, FXSTS, FLSTFSE, 2007-present FLSTF & FLSTC).

Fits Dyna & FLH/FLT 2000-2007 front or rear.

Fits XL 2000-2003 front or rear.

Fits V-Rod 2002-2005 front or rear

OEM 44082-00

90N31 Sintered brake pad set.

Fits Softail & Dyna 2008-present rear. OEM 42298-08.

90N48 Kevlar brake pad set.



Kevlar



Sintered



WIDE DRIVE CONVERSION KITS TO KICK-OFF THOSE WINTER PROJECTS!

Radium Wide Tire SwingArm Kit For Softail



**BIG
SAVINGS**

This is a premium quality hi-strength unit. Its Radium wide tire swingarm kit, fits both Evolution and TwinCam Softail models 1991-2006. This comprehensive kit designed for a 240 Metzeler or 250 Avon style wide tire application, comes w/instructions to upgrade stock Softail frames from 1991-2006. Will also fit most wide custom frames. Rear fender is supplied without holes to allow custom installations. All parts supplied in this kit have been thoroughly tested and are made from high quality materials to ensure proper operation.

83N99 Radium wide tire swingarm kit for 1991-2006 Softails.

Radium Wide Drive Kit For Touring Models



This wide tire/drive kit comes complete with all bolt-on parts necessary to install without modification. Kit includes new wide rear swingarm with a 1" axle, custom 14 gauge rear OE style fender, saddle bag support kit, drive components, billet primary spacers and all brackets & hardware necessary. Allows use of OE stock taillight, saddle bags & exhaust. Accepts 16"x 5.5" / 17"x 5.5" / 18"x 5.5" rear wheels & most tires up to 200mm wide. Requires a 20mm rear belt & pulley. Models with 18" rear use OE brake caliper, models with 16" rear require a smaller custom brake caliper. Installation of a tourpak or backrest will require OEM detachable docking hardware. Fits 02-06 FLHT, FLHR & FLTR touring models.

83N3 Radium 200mm wide drive kit for Touring models.



2100 HWY Z • P.O. BOX 669
PEVELY, MO 63070

NOVEMBER 2011

PLEASE note: Motorcycles modified with some aftermarket parts, accessories and performance parts may be restricted from use on public roads and/or limited to closed courses. Please see U.S. EPA and your respective state regulations.

NATIONWIDE 1-800-325-3914 • Local 1-636-931-3200 • International FAX 636-931-3300 • NATIONWIDE TOLL-FREE FAX (800-328-RIDE (7433)
CANADA OFFICE 866-339-3348 • www.midwestmc.net • e-mail midwest@midwestmc.net



NOVEMBER SAVINGS

kicker

CONVERSION KIT

Starter acting up at the worst times???

Don't get left behind!

Increase your options & convert that "electric start only" bike to a kicker in less than one hour. New to the lineup, Ultima® is now offering top quality kicker conversion kits for use with Ultima® LSD 6 Speeds. All mounting & installation hardware is included

1-800-325-3914

636-931-3200 / Canada: 866-339-3348

www.ultimaproducts.com



T-n-A Custom Motorcycles Tom Russell
"Best of Show" Midwest Open House
Bike Show Winner

**Cable
Actuated**

#96-969

