



**SALE:  
OCT 11-18**



**WEEK LONG  
SALE**

**BLACKOUT  
FINISH  
SHOVELHEAD  
ENGINE**

For those who are looking for a quality shovelhead engine at a realistic price, look no further! Our engineers have developed what we believe to be a superior motor that will please even the most die-hard shovelhead enthusiast. This Ultima® shovelhead motor offers modern technology in a nostalgic exterior, including dual plug heads, compression releases & 3 bolt exhaust manifold.

96 C.I. SHOVELHEAD ENGINE CARRIES A 6 MONTH LIMITED WARRANTY FROM ORIGINAL DATE OF PURCHASE.

For additional warranty details see SHOVELHEAD owners manual (included with purchase and/or available online @ [www.ultimaproducts.com](http://www.ultimaproducts.com)).

\*NOT EPA COMPLIANT  
\*NOTE: INTAKE MANIFOLD AND CARBURETOR NOT INCLUDED.

**298F213** Complete 96 C.I., Shovelhead engine, Blackout finish, & ignition module.



**SHOVELHEAD  
ENGINES, PARTS  
& ACCESSORIES!**

# ULTIMA® SHOVELHEAD 96 C.I. ENGINE



**NATURAL  
FINISH**

For those who are looking for a quality shovelhead engine at a realistic price, look no further! Our engineers have developed what we believe to be a superior motor that will please even the most die-hard shovelhead enthusiast. This Ultima® shovelhead motor offers modern technology in a nostalgic exterior, including dual plug heads, compression releases & 3 bolt exhaust manifold.

96 C.I. SHOVELHEAD ENGINE CARRIES A 6 MONTH LIMITED WARRANTY FROM ORIGINAL DATE OF PURCHASE.

For additional warranty details see SHOVELHEAD owners manual (included with purchase and/or available online @ [www.ultimaproducts.com](http://www.ultimaproducts.com)).

\*NOT EPA COMPLIANT

\*NOTE: INTAKE MANIFOLD AND CARBURETOR NOT INCLUDED.

**298F210** Complete 96 C.I. Shovelhead engine, Natural finish & ignition module.

## ULTIMA® 96 C.I. SHOVELHEAD ENGINE NATURAL FINISH W/ **NEW!** 3-PIECE CRANK ASSEMBLY



96 C.I. SHOVELHEAD ENGINE CARRIES A 6 MONTH LIMITED WARRANTY FROM ORIGINAL DATE OF PURCHASE.

\*NOT EPA COMPLIANT

\*NOTE: INTAKE MANIFOLD AND CARBURETOR NOT INCLUDED.

### Features Dual Plug Heads w/ Compression Releases

**298F214** Complete, traditional finish, Shovelhead engine w/ chrome accents & ignition module & 3 Piece Crank Assembly

# ULTIMA® REPLACEMENT HEADS FOR SHOVELHEAD

## COMPLETE STOCK REPLACEMENT CYLINDER HEADS FOR 74", 80 & 96" SHOVELHEAD

C356-T6 Casting. 1.940 stainless Int. Valves. 1.750 stainless Ex. Valves. Manganese Bronze guides. High Silicon Wire Valve Spring with black oxide steel retainers. Compression release valves. 3-bolt exhaust manifold flange for added strength & durability. Dual plug.

74"/80" HEADS

PATENT#  
D608795  
D608,372



- 93F114** Front Natural finish. 96" bore, complete.
- 93F115** Rear Natural finish. 96" bore, complete.
- 93F130** Front Natural finish. stock bore, complete.
- 93F131** Rear Natural finish. stock bore, complete.



## BIG BORE 3-5/8" CYLINDERS FOR SHOVEL



Top quality 3-5/8" bore replacement cylinders for Shovel 1966 thru 1984.  
Stock length cylinder, Stroke: 3-31/32" = 82 C.I.  
Stroke: 4-1/4" = 88 C.I. Stock stroke on 74 C.I. is 3-31/32".  
Stock stroke on 80 C.I. is 4-1/4".

- 93F261** Front cylinder, stock length (5.330").
- 93F262** Rear cylinder, stock length (5.330").

# ULTIMA® ENGINE CASES SHOVELHEAD '70-'84



1970 - 1984 Case. Cast-in steel inserts guaranteed not to move. Large bore breather for increased crank case vacuum and less blow by. Alignment dowels for true line bore. Counterbored stainless allen head case bolts. Close machining tolerances. Made from prime C355 aluminum. Styling and cosmetic machining for a custom look.

## ENGINE CASE KITS

**206F25** Stock bore case, Natural finish. Fits 1970-1984 Shovelheads in both 74 C.I. and 80 C.I. Uses 1984-1991 EVO oil pump.

**206F21** 3.625" bore case, Natural finish. 96" big bore cases use 1992 & later oil pump.

# CYLINDERS FOR 74 C.I. (1200CC) & 80 C.I. (1340CC) 1966 THRU 1984



**93F270**

1200CC CYLINDER ONLY, FRONT

**93F271**

1200CC CYLINDER ONLY, REAR

## ROCKER COVER OIL LINES FOR SPORTSTER® & SHOVELHEAD



Perfect replacement rocker box oil lines for Sportster® & Shovels. Includes complete fittings and seals.

**71F138** For Sportster® 1957 & later. OEM 17324-57.

**71F137** For Shovel 1966 & later. OEM 62783-66A and 62785-66A.

## ALUMINUM ALLOY TUBULAR PUSHRODS FOR PAN 1948 THRU 1952 LOWER END USING SHOVEL UPPER ALUMINUM ALLOY TUBULAR PUSHRODS FOR H-D® 74" 1966 & LATER



These U.S.A. MADE strong, lightweight pushrods are manufactured from the best materials obtainable regardless of cost. All parts are accurately machined, holding tolerances of as small as five ten thousandths inch (.0005"). All steel wear surfaces are CarboNitrade heat treated for maximum durability and long life expectancy at high valve spring loads and high rpm.

**91F261** For Pan 1948 thru 1952 lower end using Shovel upper. Sold as set of four

**91F262** For H-D® 74" 1966 & later. Use with hydraulic lifters.

## ALUMINUM ALLOY TUBULAR PUSHROD AND HYDRAULIC LIFTER CONVERSION KIT FOR SHOVEL 1966 THRU 1983



The installation of this U.S.A. MADE kit will correct all problems associated with hydraulic lifters and at the same time substantially reduce valve train weight. One set contains 4 adjustable pushrods, 4 springs, and 4 hydraulic lifter adapters.

**91F264** Shovel 1966 thru 1983. Sold as set of four.



# PRIMARY INSPECTION PLATE



CHROME PLATED

Chrome plated steel outer primary inspection cover without peg and shifter hole. Countersunk holes.

**89F90** For FL 1965 thru 1984 and FXWG, FXST & FLST, 1982 & later. OEM 60572-78T. SOLD EACH

# "DOME" DERBY COVERS FOR BIG TWIN



Die-cast derby cover. Fits 1965 thru 1998 74" & 80" Big Twins.

**89F112** Plain. OEM 25414-70.

# ULTIMA® 1-3/4" DUAL CROSSOVER HEADERS FOR FLH SHOVEL 1970 THRU 1984



1-3/4" Dia. independent dual crossover header exhaust will fit FLH Shovel 1970 thru 1984, kick or electric start. Includes mounting bracket.

**62F632** Crossover header exhaust. SOLD AS SET

# CAST OUTER PRIMARY COVERS FOR FX & FXST



Die cast & reinforced, these outer primary covers offer superb stronger-than-stock construction.

**88F49** For FX 1970 thru 1982 (except FXB & FXR). Also fits all 74" & 80" not using floorboards. OEM 60507-82TA.

# CAST OUTER PRIMARY FOR BIG TWIN



Die cast & reinforced. Stronger than stock. Has tab for floorboard mount.

**88F52** Fits kickstart Big Twin 1965 thru 1982 & electric start Big Twin 1970 thru 1982, except FLT & FLH belt drive. OEM 60508-82TA. SOLD EACH

# 9" FISHTAIL EXTENSION FOR UNIVERSAL USE ON 1-3/4" HEADERS



This fishtail extension fits right or left side and can easily be added to existing head pipes. Use part No. 66-48 clamps.

**64F369** Fishtail extension. 29" Long, no baffle. SOLD EACH

ACORN NUTS CHROME PLATED



# ACORN NUT & GASKET KIT FOR SHOVELHEAD

Our kit includes 2 studs, 2 exhaust gaskets, chrome plated acorn nuts and lockwashers.

**66F100** For Shovel 1966 thru 1984. SOLD AS KIT

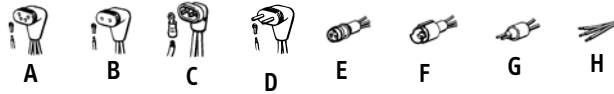
# SOLID STATE ELECTRONIC VOLTAGE REGULATORS BLACK

## U.S.A. MADE SOLID STATE ELECTRONIC VOLTAGE REGULATORS

These quality manufactured solid state voltage regulators cover the popular H-D® applications. Highly reliable; the ceramic & circuit board technology gives a combination of improved electrical regulation with lower temperatures. Available chrome plated or black with polished fins. 30 Day warranty.



### CONNECTOR TYPES



APPLICATION	YEAR	OEM NO.	CHARGING SYSTEM	CONNECTOR TYPE
FL & FLH.	1965/1969	74511-65	Replaces 12V mechanical regulator or 12V generator.	H <b>53F306</b>
XL, XLH & XLCH.	1965/1977	74510-64		
FL & FLH.	1970/1975	74510-70A	15 Amp alternator.	A <b>53F302</b>
FX & FXE.	1971/1975			
FL, FLH, FLH-80, FLT & Classic	1976/1980	74512-79A	17.8 Amp alternator	B <b>53F303</b>
FX, FXE, FXS, FXS-80 & FXEF-80.	1976/1980			
FLH 80 & Classic.	1981/1984	74516-86	22 Amp alternator.	D <b>53F309</b>
FX, FXE, FXEF, FXS & FXB.	1981/1985			
FXWG.	1981/1986			
FLT & FLHT Classic	1981/1988			
FXR, FXRS, FXRT & FXRP.	1982/1988			
Softail® models.	1986/1988			

## LATE H-D® STYLE TAILLIGHT

CHROME PLATED



Original style taillight for XL, FX, and all Big Twins 1973 thru 1999.

**8F74** Taillight with 12V bulb. OEM 68008-73.



86-79

**86F79** Lens only with Blue Dot installed.

## ULTIMA® THUNDER FIRE™ PRESTOLITE-TYPE STARTER MOTOR



Fits FL 1966 thru 1981, FLT 1980 thru 1982, FXR 1982, XL 1967 thru 1973, and XL 1977 thru 1980. A fine restoration item, this reproduction of the H-D® OEM Prestolite electric starter motor is available in chrome or black. We also offer many of the replacements parts for this starter motor.

**70F130** Complete black starter motor assembly. OEM 31458-66A.

**70F131** Complete chrome starter motor assembly. OEM 31458-66A & 31463-88T.

## ULTIMA® THUNDER FIRE™ HITACHI-TYPE STARTER MOTOR



Fits FL 1982 thru 1984, FXR & FLT 1983 thru 1988, FXST 1984 thru 1988, FXE 1974 thru 1988, and XL 1974 thru 1976. A reproduction of the H-D® OEM electric starter motor used on many applications from 1973 thru 1987 is available in chrome or black. We also offer many of the replacements parts for this starter motor.

**70F138** Complete black starter motor assembly. OEM 31570-73.

## TOMBSTONE TAILLIGHT

CHROME PLATED



Tombstone taillights uses standard 12V bulb. Metal replica of H-D® early style taillight used as original equipment on 1947 thru 1954 models, OEM 68003-47T. Superbly crafted & chromed. "Universal fender mounting for most applications. Includes chrome plated license mount, black rubber mounting gasket for paint protection.

**8F56** Complete taillight with 12V bulb. OEM 68003-47.

## EARLY H-D® STYLE TAILLIGHT

Original style taillight in chrome, with 12V bulb. Fits 1955 thru 1972 Sportster®, Big Twin, and many custom applications.

**8F59** Chrome plated taillight. OEM 68010-64B.



## HANDLEBAR CONTROL KIT



Chrome plated handlebar control kits available with or without handlebar switched and wiring harness. Fits FL models 1972 thru 1981, and FX & Sportster®, 1973 thru 1981. **SOLD AS KIT**

**47F202** Kit including master cylinder and clutch lever assembly only.

## H-D® STYLE FLOORBOARDS RECTANGULAR & OVAL



RECTANGULAR

OVAL

### EARLY STYLE MOUNTS

Fits 1940 thru 1984 4 speed models.

**123F5** Solid oval floorboards. Replaces OEM 50603-40.

**123F4** Anti-vibe oval floorboards.

**123F10** Anti-vibe rectangular floorboards. Replaces OEM 50603-74TA.

## FORK CLAMP SET BIG TWIN 1949 & LATER FLH STYLE



ALL CLAMP  
SETS  
CHROME  
PLATED

Fits fork tubes with O.D. 1.625". Top clamp has riser mount holes 3.5" center to center.

**29F45** Fits Big Twin 1949 & later. FLH style. Chrome plated tree. OEM 45700-48 & 56121-60A.

## SPEEDOMETERS for FAT BOB® STYLE DASH



1950 MODEL  
STYLE NUMBERS



1960 MODEL  
STYLE NUMBERS

**NOTE:** The exact face colors & numbers may vary with availability from manufacturer. Ratio will be correct. 5/8 x 18 nut.

### 1:1 RATIO SPEEDOMETERS

For use on FX, FXWG & FL, 1968 & later, with speedometer drive units mounted on the transmission.

**57F88** Speedo with 1950 style numbers. OEM 67004-53.

**57F89** Speedo with 1960 style numbers.

## HANDLEBAR WIRING HARNESS KIT

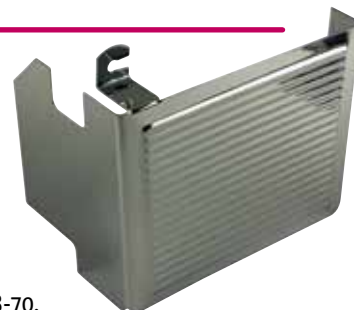


Handlebar wiring harness kits come 48" long with color coded wires and cover sheath. Switches are attached for both right and left sides.

Fits Big Twin 1972 thru 1981 and Sportster® 1973 thru 1981.

**18F275** With Black switches.

## WRAP AROUND BATTERY COVER



**89F255** Fits FL, FLH, FLH-80, Classic, 1970-later. Ribbed. OEM 66378-70.