



**MAY 13-20**

# Friday to Friday Sale

## CHAIN ADJUSTER & REPLACEMENT SHOE KIT FOR '06-'17 DYNA, '07-'17 SOFTAIL, '07-'16 DRESSER, 09-16 FL TRIKE MODELS

**77S912** Revox manual primary chain adjuster kit replaces OEM 36500020. Fits: 06-17 Dyna, 07-17 Softail, 07-16 Dresser, 09-16 FL Trike models.

**77S913** Replacement chain adjuster shoe kit for Midwest #77-912. Kits includes: new adjuster shoe, 2 x lock plates and bolts.

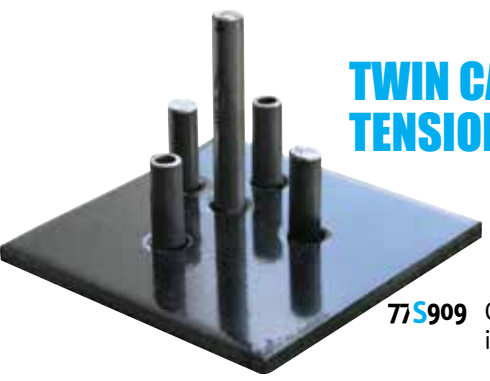


77-912

**NEW!**



77-913



## TWIN CAM® CHAIN TENSIONER SHOE TOOL

**77S909** Cam chain tensioner shoe installation & removal tool

## HYDRAULIC REPLACEMENT SHOE

**77S911** 2006 Hydraulic replacement shoe.



## TWIN CAM® CHAIN TENSIONER PAD & PIN

**77S910** Chain tensioner pad & pin for Twin Cam®



# ULTIMA® '99-'06 TWIN CAM® SECONDARY CHAIN



**98S282** Secondary Chain, OEM 25683-06

## TWIN CAM® ROCKER BOXES



Die cast two-piece aluminum rocker box kit. Includes top cover, lower cover, inner rocker arm carrier, gaskets & hardware.

Fits Twin Cam® models 1999-up. **SOLD AS KIT**

**89S335** Chrome rocker box kit.

**89S336** Polished rocker box kit.

## ROLLER ROCKER ARMS FOR EVO®, TWIN CAM® & ULTIMA® ENGINES



Made from 4140 steel forgings, our new rocker arms are the strongest on the market today. These new arms incorporate a 1.675 ratio for increased lift and will match our Ultima® heads perfectly. A best value product. Uses OE rocker shafts.

**91S699** Fits Ultima® engines & 1984-later Evolution® Big Twin & XL engines. Also fits 1999-later Twin Cam® engines. 1.675 ratio.

## ULTIMA® DUAL EXHAUST 2009 - 2016 TOURING & HD® TRI GLIDE® MODELS



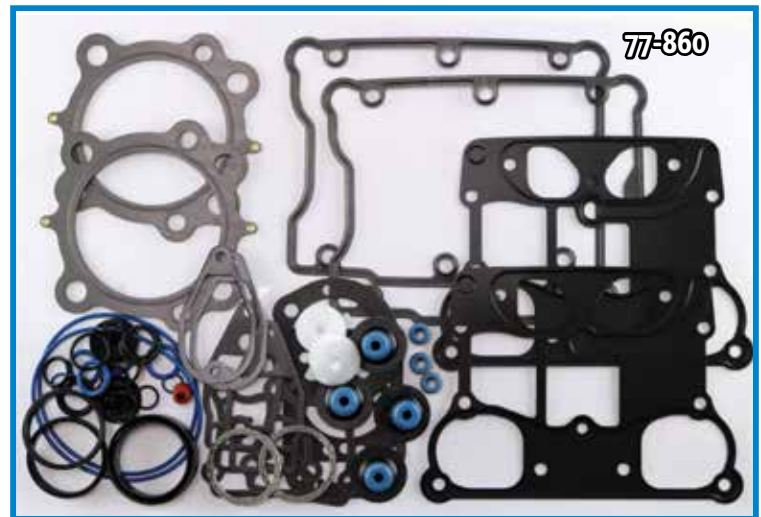
For 2009 - 2016 Touring & HD® Tri Glide® Models with non-catalyst mufflers

**60S375** Black dual exhaust

- ◆ Exclusive design moves the rear cylinder header under the bike to reduce radiated heat to the passenger
- ◆ Full chrome heat shielding with 220° coverage



# ULTIMA<sup>®</sup> GASKET SETS FOR TWIN CAM<sup>®</sup>



## MOTOR KITS - TWIN CAM<sup>®</sup>

- 77S859** COMPLETE MOTOR KIT, TWIN CAM<sup>®</sup> 95CI
- 77S860** TOP END KIT, TWIN CAM<sup>®</sup> 88CI
- 77S861** TOP END KIT, TWIN CAM<sup>®</sup> 96CI
- 77S862** CAM CHANGE KIT, TWIN CAM<sup>®</sup>



# TWIN CAM® OIL PUMP & BACKING PLATES

Billet oil pump for Twin Cam®. Made from billet aluminum, 40% increase in feed volume & 60% increase in scavenging volume. Comes complete with all necessary hardware and gaskets included.

- 98S504** Twin Cam 88™ high flow oil pump, 1999-2006. OEM 26035-99A.
- 98S506** Tensioner pins & guide tower. Adapts #98-505 to chain drive system. Fits 1999-06 Twin Cams®, except '06 Dyna®.
- 98S502** Stock replacement hydraulic cam chain tensioner. Replaces OEM 39968-06 & 39969-06.
- 98S507** Twin Cam® high flow oil pump, 2007-2012. OEM 26037-06.
- 98S508** Twin Cam® oil pump backing plate, 2007-2012.



98-504

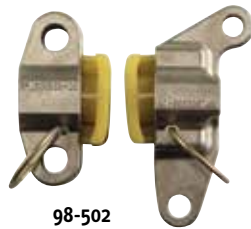


98-507



98-508

98-506



98-502

## GEAR COVER FOR TWIN CAM®



88-90



88-91

## TWIN CAM® COMPLETE PUSHROD COVER KITS



91-998



91-999

Complete pushrod cover kits include all components needed for one engine.

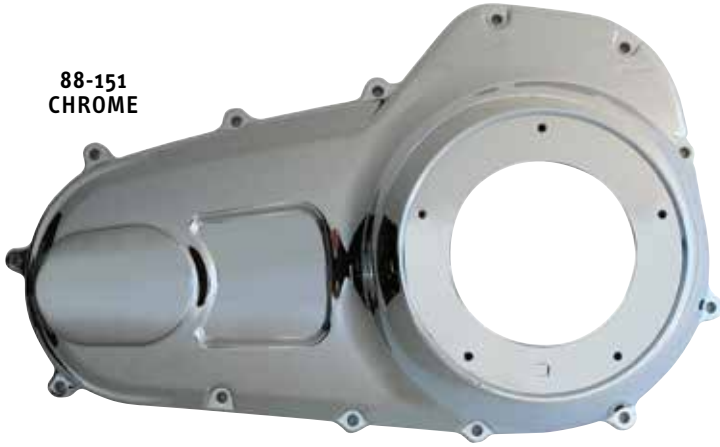
- 91S998** Pushrod cover kit, Twin Cam® OEM style.
- 91S999** Pushrod cover kit, Twin Cam® quick change.

Chrome plated cam cover (nosecone) for end oiling pinion shaft.

- 88S90** Gear cover for Twin Cam® '01 & later, Chrome.
- 88S91** Gear cover for Twin Cam® '01 & later, Black.

# NARROW PROFILE PRIMARY COVERS FOR 2007-2016 TOURING

88-151  
CHROME



88-152  
SATIN  
BLACK



These new outer primary covers are shaped to slim the bikes profile on the left side, this narrow profile outer primary cover clears the way for an easier reach to the ground. The open area provides short-limbed riders a straight leg path to the payment and simplifies walking the bike into and out of parking spots. **SOLD EACH**

**88S151** Chrome outer primary cover.

**88S152** Satin Black outer primary cover.

**Matching narrow style derby covers.**

**88S153** Chrome derby cover.

**88S154** Satin Black derby cover.



## DIE CAST DOMED COVER 1999 & LATER TWIN CAM 88™



Beautifully chromed die cast aluminum covers give that classic chromed look. Use on 1999 & later Twin Cam 88™.

**89S498** Derby cover. Replaces OEM 25415-99.

**SOLD EACH**

# ULTIMA® ADJUSTABLE PUSHROD KITS FOR TWIN CAM®



These heavy duty American made adjustable pushrod kits contain everything you need for immediate installation. **SOLD AS KIT**

**91S996** Chrome Adjustable pushrod kit for Twin Cam® 88-113 C.I. engines. **U.S.A. MADE.**

## ULTIMA® LIFTERS TWIN CAM® 1999 & LATER



**91S888** Ultima® stock lifters for Twin Cam® 1999 & later.

## TAPPET LIFTER BLOCK COVER SET FOR TWIN CAM® '99-'17



**91S970** BLift cover set for Twin Cam® **SOLD AS PAIR**

# ULTIMA® ENGINE CASE FOR TWIN CAM A REPLACEMENT

## ENGINE CASE KITS

- 206S103** Ultima® Twin Cam stock replacement case, Black
- 206S104** Ultima® Twin Cam stock replacement case, Silver

## ULTIMA® CRANK PIN 1.671" STD DIA



- 98S548** Crank pin, 1.671" std dia



## ULTIMA® TWIN CAM® REPLACEMENT CRANKSHAFT ASSEMBLY FOR '07 AND LATER "A" MODEL ENGINES.

These crankshafts are dynamically balanced and feature H-beam connecting rods. They use the standard 7.67 twin cam rod. \*NOTE: the H-beam rods used do NOT have the tapered wrist pin end.\* Our sprocket shaft was independently lab tested at 40% stronger than a stock crankshaft. They are available in a variety of different strokes to cover any build you may have in mind. Custom balancing can be done upon request.

- 98S690** 4.00" stroke
- 98S691** 4.25" stroke
- 98S692** 4.375" stock stroke
- 98S693** 4.50" stroke
- 98S694** 4.625" stroke

